



Southern Louisiana

Tornado

October 26, 2025

October 26, 2025

Southern Louisiana

Tornado

Climavision's radar in Chauvin, LA sits in a prominent weather radar gap. The closest NEXRAD radar is KHDC about 77 miles away. The radar beam from KHDC was at almost 4,600 ft AGL for this event, whereas Climavision's LA14 radar scanned at 1,475 ft AGL.



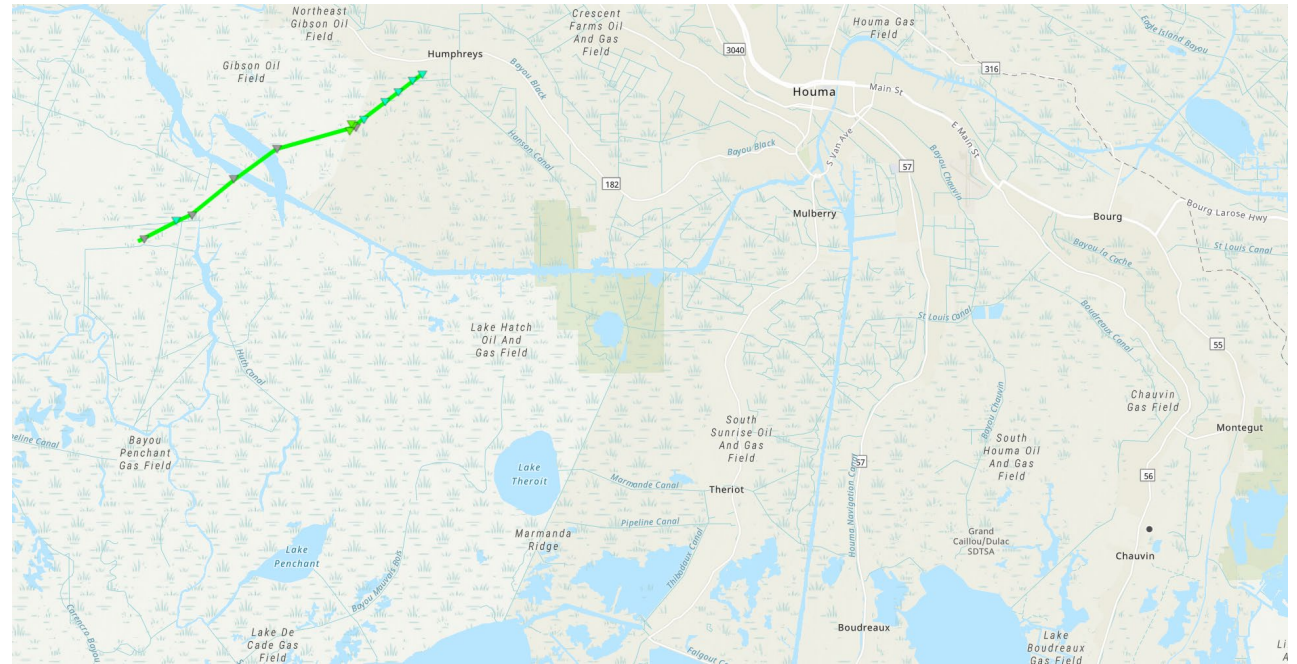
October 26, 2025

Southern Louisiana Tornado

Survey Summary:

The damage path of an EF-1 tornado was identified via high resolution satellite imagery over inaccessible rural marsh areas of Terrebonne Parish, southwest of Humphreys, LA. This tornado began southwest of Blue Bird Canal where a defined, but weak path of damage to marsh vegetation was evident. The marsh damage continued northeast across Blue Bird Canal, narrowly missing fishing camps, and was collocated with a strong tornado vortex signature on KHDC radar imagery. The tornado intensified as it crossed the Intracoastal Waterway and Lake Hackberry with numerous displaced trees evident along a canal and maximum path width around 250 yards. This was collocated with a tornado debris signature that was identified on Climavision V014 radar imagery. The tornado continued northeast and quickly weakened which is corroborated by KHDC and Climavision radar imagery. The tornado evidently lifted prior to reaching structures along Bayou Black Drive in Humphreys.

NWS New Orleans Damage Survey



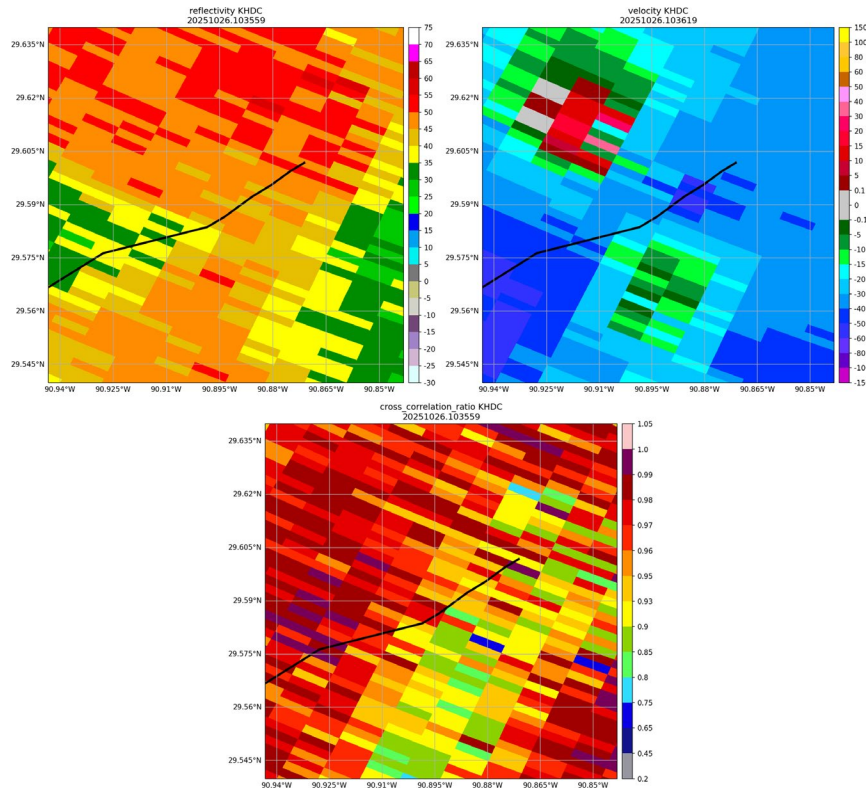
Tornado path verified by NWS damage survey and Climavision radar data.

October 26, 2025

Southern Louisiana Tornado

On October 26th, a small tornado touched down 11 miles southeast of Amelia, LA. The NWS New Orleans office conducted a damage survey and found a damage path approximately 8 miles long. The NWS office also viewed Climavision data and used it to confirm tornado touchdown and timing. A tornado warning was issued as the tornado began to produce damage.

KMVX – NEXRAD



Climavision

