



# Collins, PA

Tornado

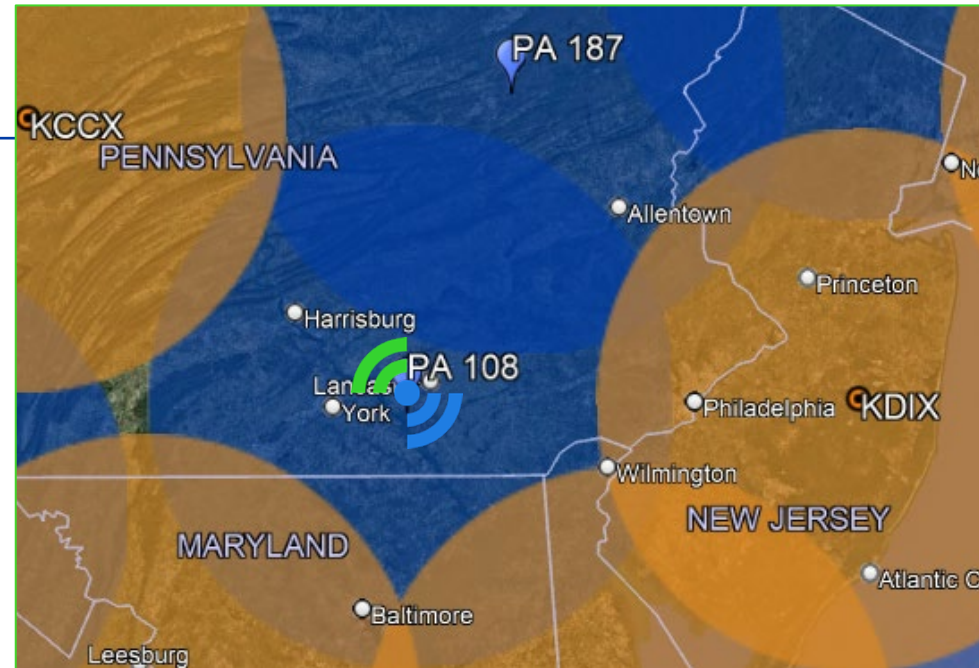
September 5, 2025

September 5, 2025

# Collins, PA

## Tornado

PA108 is located in Millersville, PA and provides gap-filling coverage for 60 miles in every direction. Orange circles represent NEXRAD systems out to 4,000ft above the ground. Blue circles represent radar “gaps” and planned or live supplemental Climavision radar sites – areas with diminished coverage beyond the low-level visibility of NEXRAD systems. The nearest NEXRAD radar to Millersville is KLWX around 88 miles away.

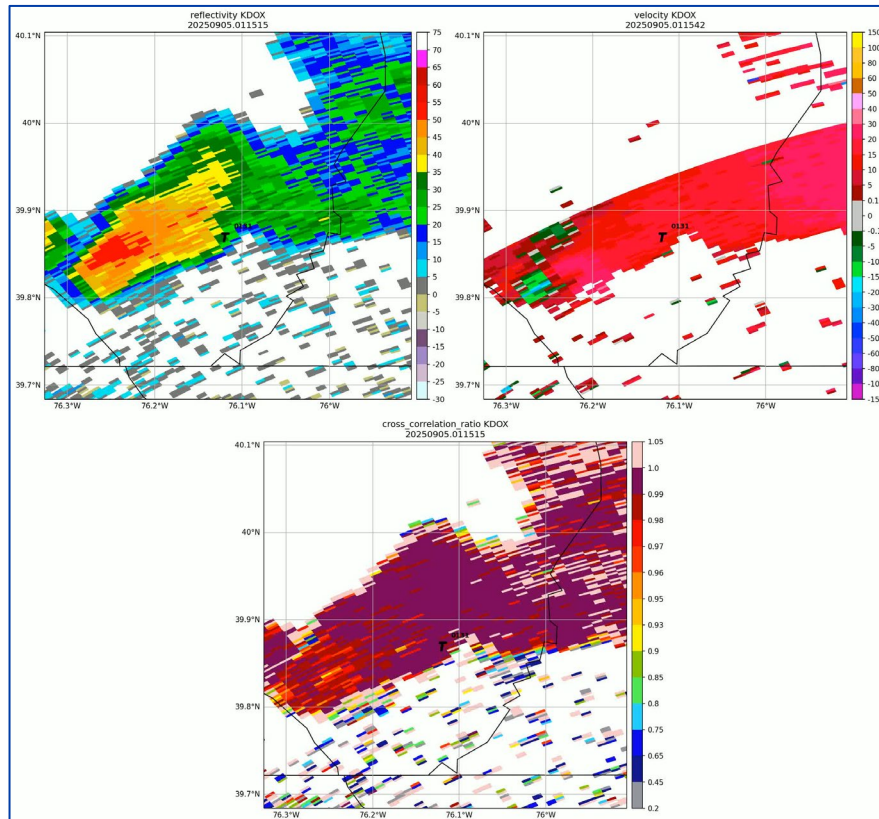


September 5, 2025

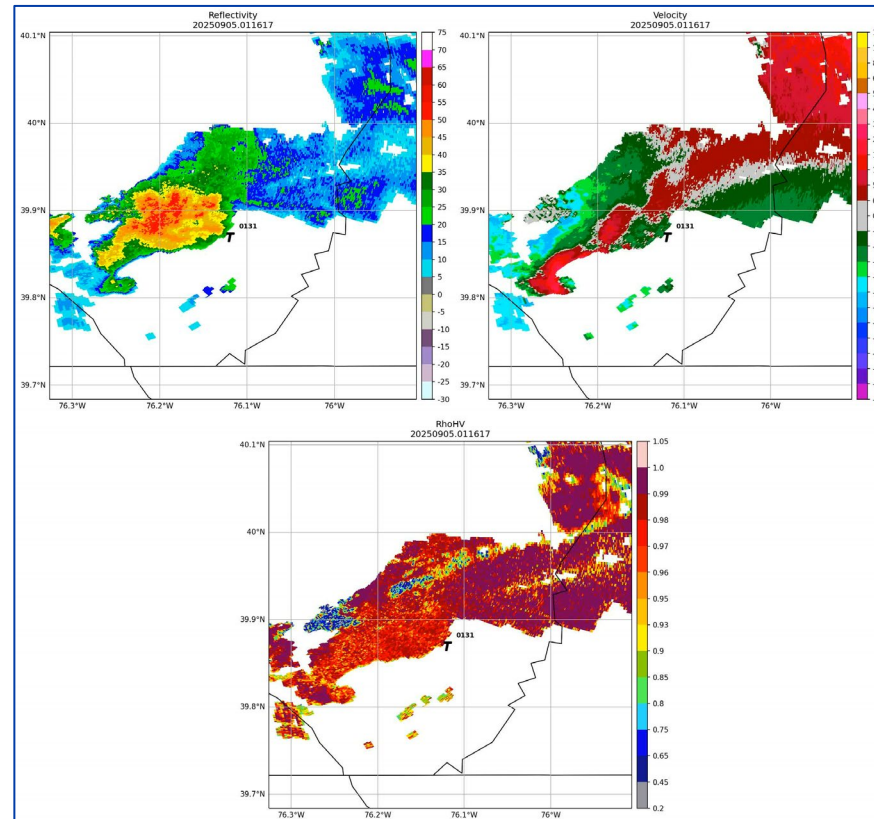
# Collins, PA Tornado

On September 5th, 2025, an EF0 tornado touched down 15.5 miles from Climavision's PA108 radar located in Millersville, PA. Initially, there was no tornado warning, and a damage survey was not conducted. However, local footage of storm damage paired with Climavision's radar data prompted a tornado survey and discovery of EF-0 damage. While circulation was visible on the nearest NEXRAD, Climavision's system added tremendous detail and confidence when tracking the storm. Climavision's radar also displayed a drop in correlation coefficient, a common indicator of lofted debris or strong updrafts. PA108 sampled the storm at 260 meters AGL, while KDOX scanned at 1,700 meters AGL.

KDOX



PA108



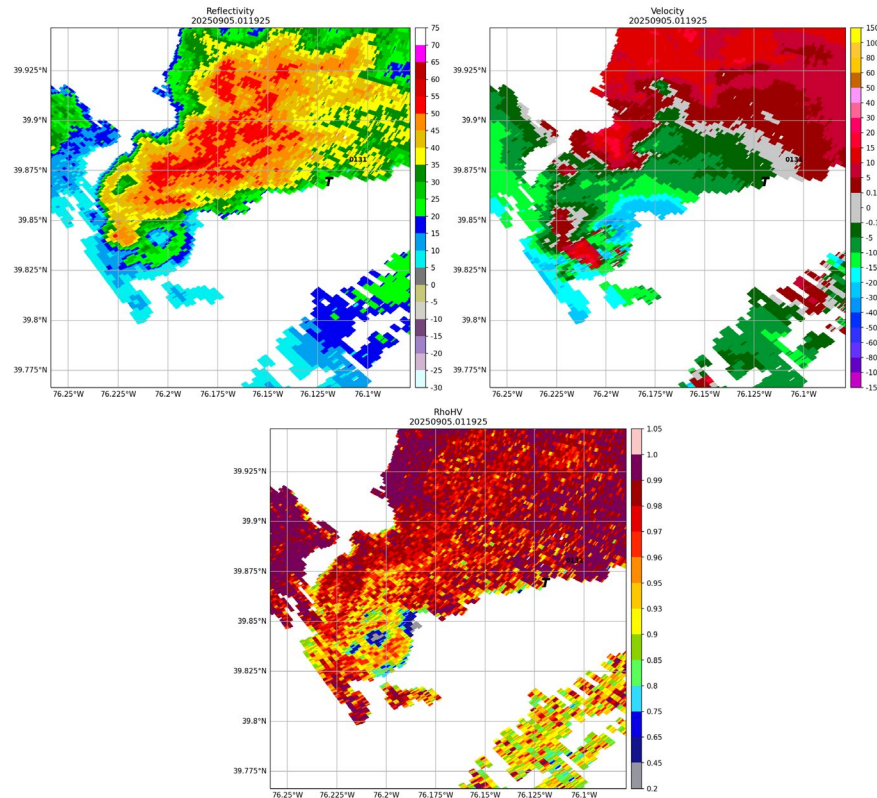


September 5, 2025

# Collins, PA Tornado

On September 5th, 2025, an EF0 tornado touched down 15.5 miles from Climavision's PA108 radar located in Millersville, PA. Initially, there was no tornado warning, and a damage survey was not conducted. However, local footage of storm damage paired with Climavision's radar data prompted a tornado survey and discovery of EF-0 damage. While circulation was visible on the nearest NEXRAD, Climavision's system added tremendous detail and confidence when tracking the storm. Climavision's radar also displayed a drop in correlation coefficient, a common indicator of lofted debris or strong updrafts. PA108 sampled the storm at 260 meters AGL, while KDOX scanned at 1,700 meters AGL.

PA108



September 5, 2025

# Collins, PA

## Tornado

The storm that impacted Collins, PA was entirely unwarned, and a damage survey was not initially conducted. In a testament to collaborative efforts, Climavision reached out to local partners after seeing indications of a tornado in the radar data. Local residents shared photos of damage in the township, prompting a damage survey by the National Weather Service (NWS). After the NWS viewed the damage, they issued a report for an EF-0 tornado. Climavision's data was trusted by many entities, including the University of Millersville, a local news station, WGAL, and the NWS.

