



Kentucky Derby, HIREs

Advanced Rain Forecast

May, 2025

HIRES for the Derby

Advanced Rain Forecast

Major outdoor events like the Kentucky Derby demand precise, early insight into potentially disruptive weather. While global models offer general rain signals, they lack the detail and consistency needed to make confident forecasts.

WAVE-TV needed a forecast they could trust—with enough lead time to build coverage, update viewers, and prepare the community. But most high-resolution models do not extend far enough in advance to be useful beyond a 3-day forecast ahead of Derby weekend. That's where Horizon AI Hires stood out.



May, 2025

HIRES for the Derby

Advanced Rain Forecast

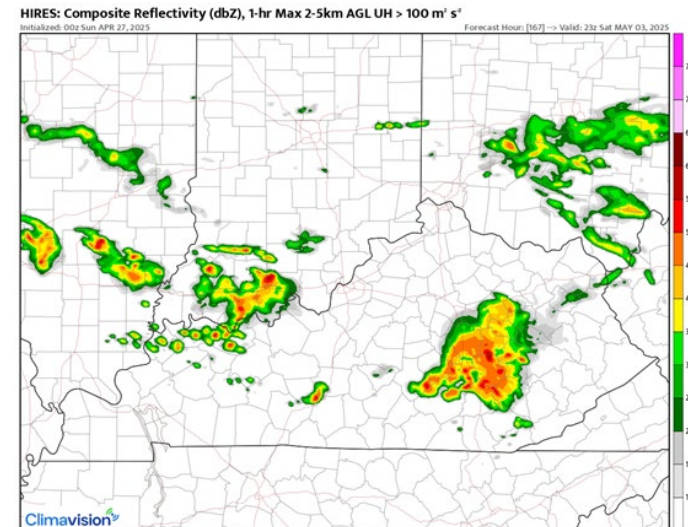
On April 27 at 00Z (8 PM EDT April 26), HIRES was the first to show a line of storms approaching Louisville—aligned almost exactly with the scheduled Derby post time. Indications for rain continued consistently throughout subsequent model runs leading up to Derby Day.

Observed Results

The HIRES model's early forecast was impressively close:

- Rain and storms did affect the region during the race window
- Observed radar confirmed moderate to heavy rainfall in eastern Kentucky and storm development near Louisville
- Horizon AI HIRES outperformed other models in both timing and localization—despite being issued 7 days prior

Forecast for May 3, 2025, at 7 pm



Forecast for May 3, 2025, at 8 pm

