



Radar Case Study

WHEELER LAKE, AL TORNADO

SEE WHAT YOU'VE BEEN MISSING

CLIMAVISION RADAR IN MOULTON, AL

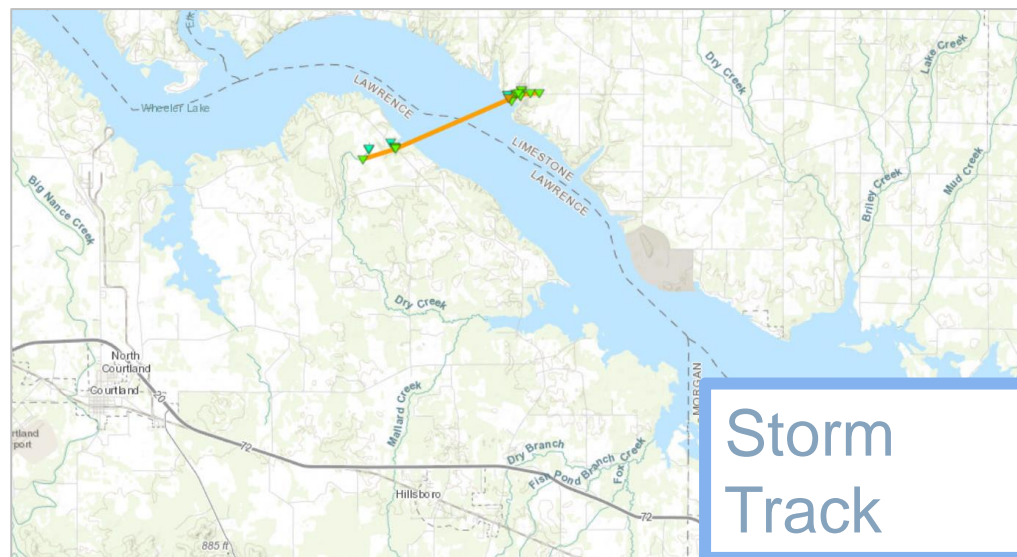


Climavision's radar in Moulton provides the lowest level coverage for Wheeler Lake at 700 ft AGL. KHTX's beam sits ~3.1k ft AGL.

Wheeler Lake, AL Tornado

During a severe weather outbreak across the southeast, a northern portion of Wheeler Lake, Alabama sustained significant damage from an EF-3 tornado. A later NWS survey indicated the tornado had peak wind speeds of 136 mph. While this storm was detected by the nearest NEXRAD's, much clearer detail was provided by Climavision's Moulton, Alabama radar.

May 9, 2024

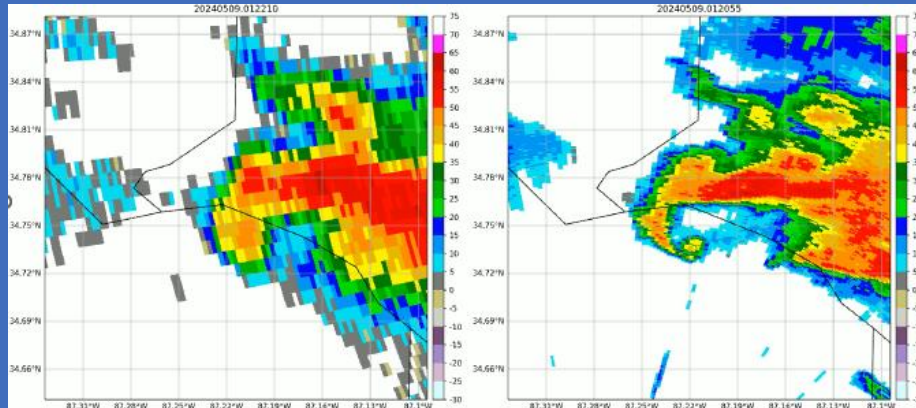


Wheeler Lake, AL Tornado

May 9, 2024

KHTX

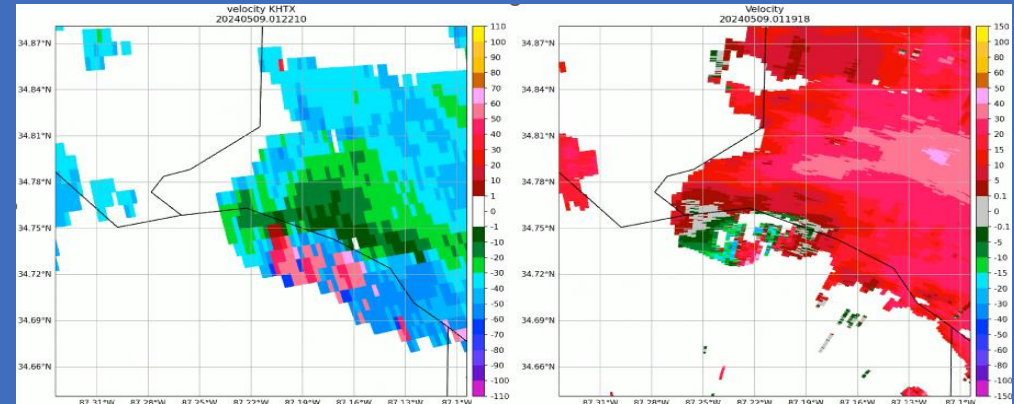
Climavision



Reflectivity

KHTX

Climavision



Velocity

In the reflectivity comparison above, both radars indicate that a hook echo is present. Looking in further detail, Climavision's Moulton radar shows significantly better resolution. Within the velocity data, Climavision shows a clear couplet. Furthermore, lowering of ZDR values confirm a tornado debris signature (TDS) demonstrating the maturity and power of the tornado on the ground.

Climavision's Moulton radar showing a clear TDS in ZDR.

