

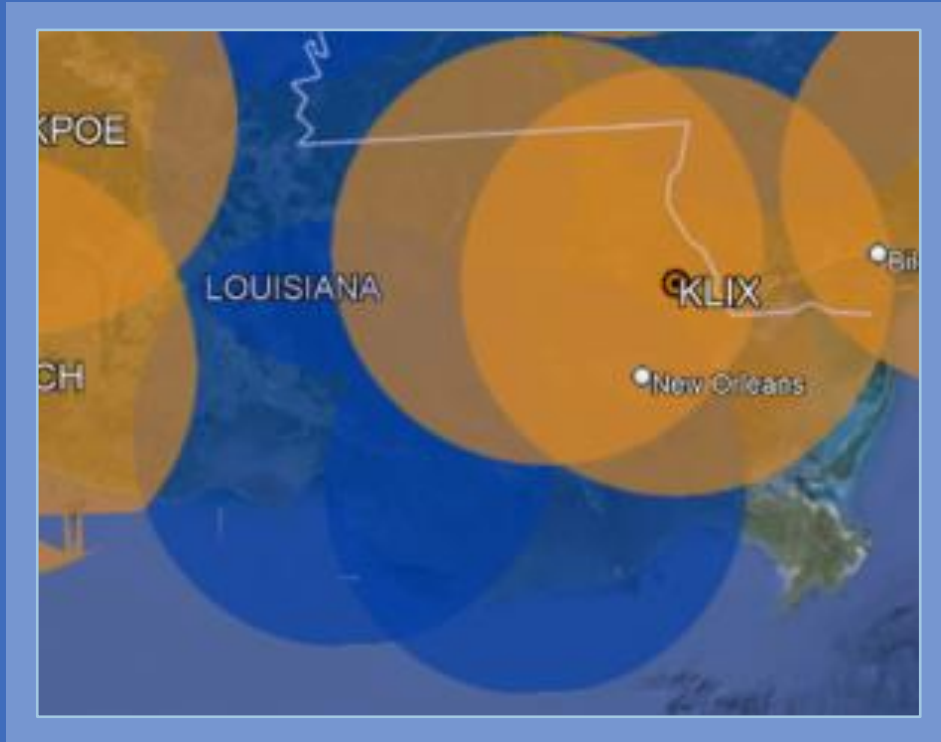


Radar Case Study

SOUTHEAST LOUISIANA QPE

SEE WHAT YOU'VE BEEN MISSING

CLIMAVISION RADAR IN CROSSVILLE, TN



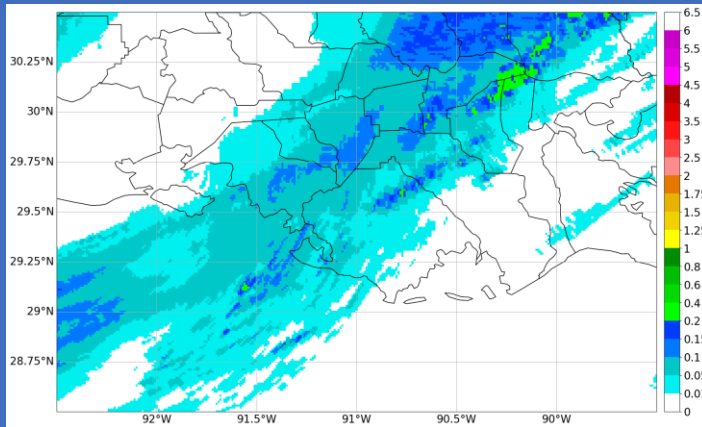
Climavision has three radars currently installed in Louisiana – Franklin, St. Francisville, and Chauvin.

KLIX (orange) is shown in the previous Slidell and new Hammond location.

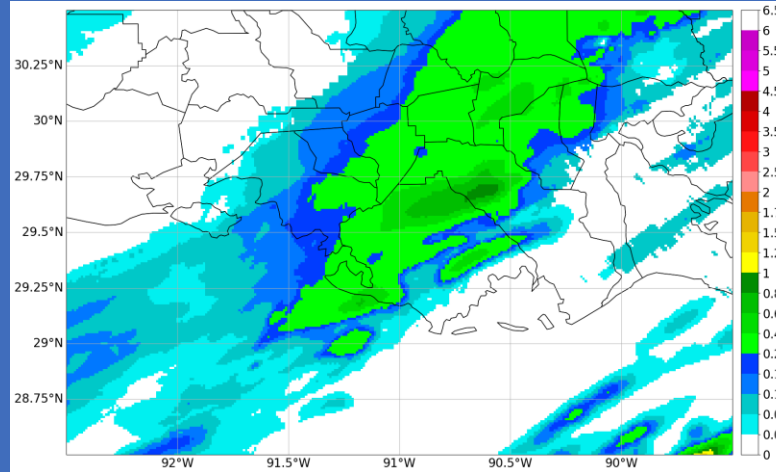
Southeast Louisiana QPE

December 2023

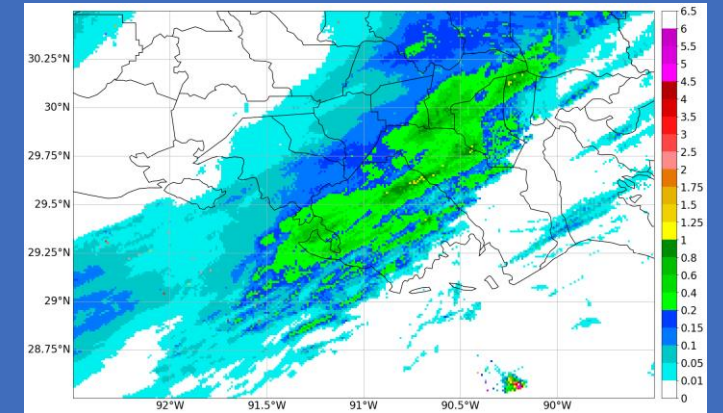
NEXRAD 1-hr QPE
without KLIX



1-hr QPE MRMS Multisensor data
(general truth)



Climavision[®] + NEXRAD 1-hr
QPE without KLIX



The KLIX NEXRAD radar was offline in December during a move from Slidell to Hammond. During this time rain occurred in Southeast Louisiana and was underestimated due to the temporary data void. Using Climavision's radar data from sites in Chauvin and Franklin, rainfall Quantitative Precipitation Estimation (QPE) aligned more accurately with MRMS data.