



Radar Case Study

PENNSYLVANIA SNOW SQUALLS

SEE WHAT YOU'VE BEEN MISSING

CLIMAVISION RADAR IN MILLERSVILLE, PA



The nearest NEXRAD radar to Millersville is KLWX in Sterling, VA which has a radar beam height of ~8,300 ft AGL followed by KCCX, ~9.8k ft AGL, and KDIX ~10k ft AGL. Climavision's radar can see from 150 ft AGL and up, better detecting weather phenomena near the surface.

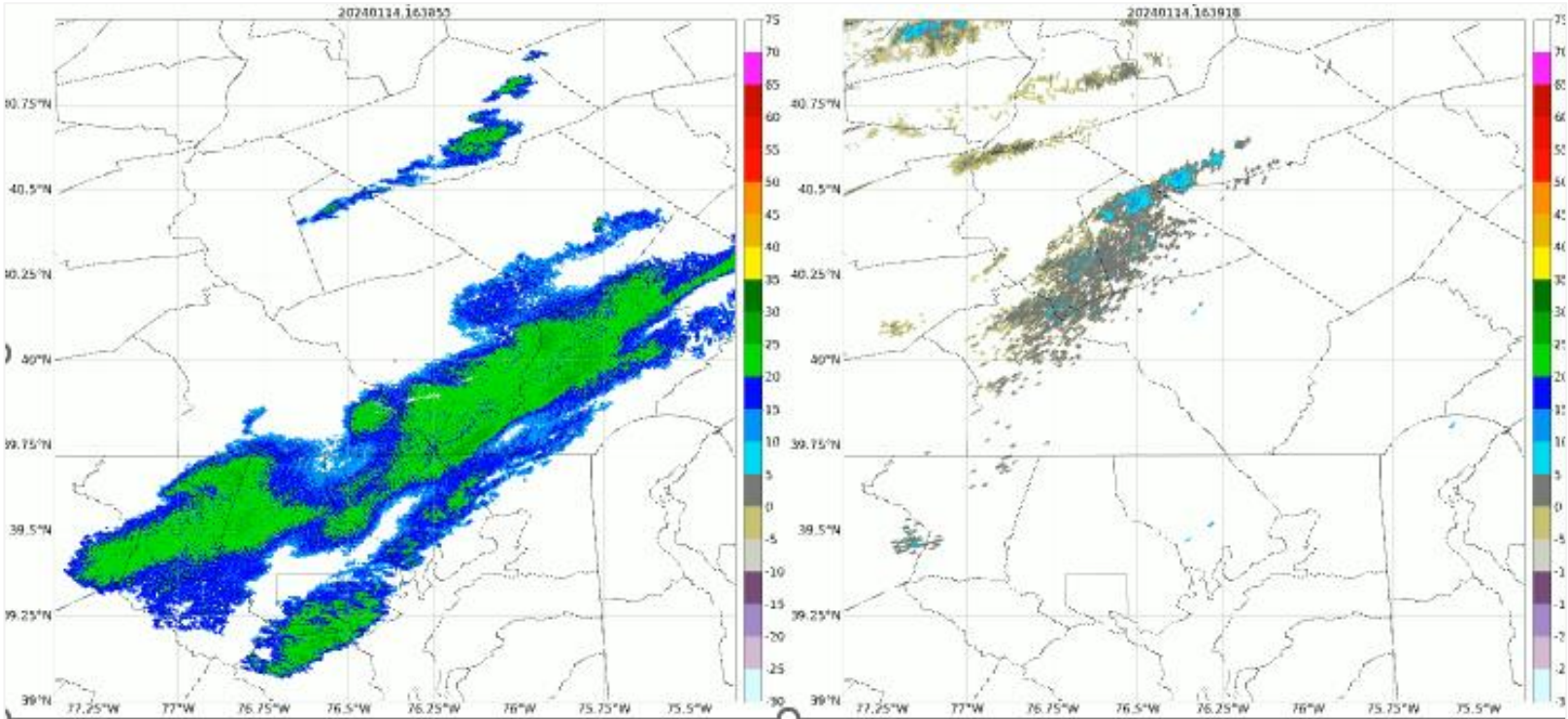
January 14, 2024

Pennsylvania Snow Squalls

Several warnings were issued for snow squalls across southeastern Pennsylvania. Climavision radars were able to clearly detect these events while the nearest NEXRAD radars overshot some of the snow bands that occurred. In the loop below, Climavision's radar in Millersville shows superior continued tracking of the snow squalls as they continued eastward.



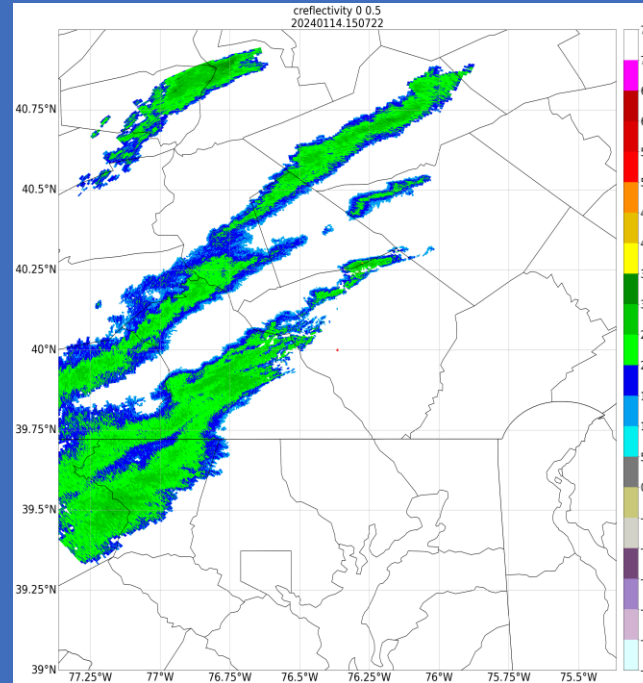
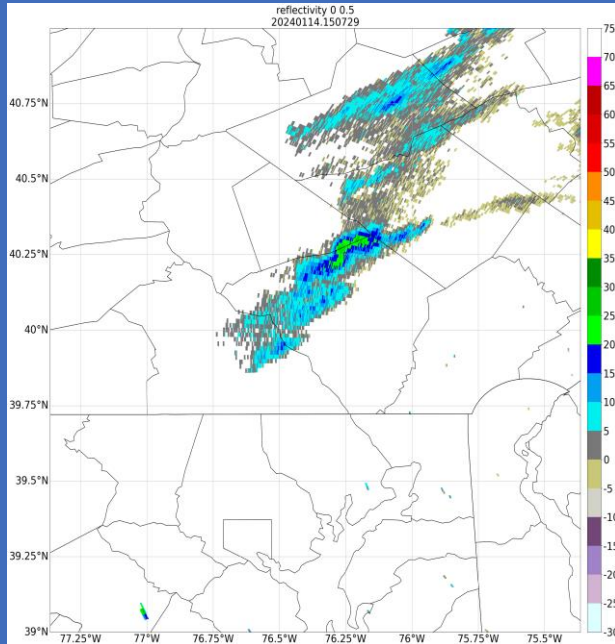
KCCX – State College, PA



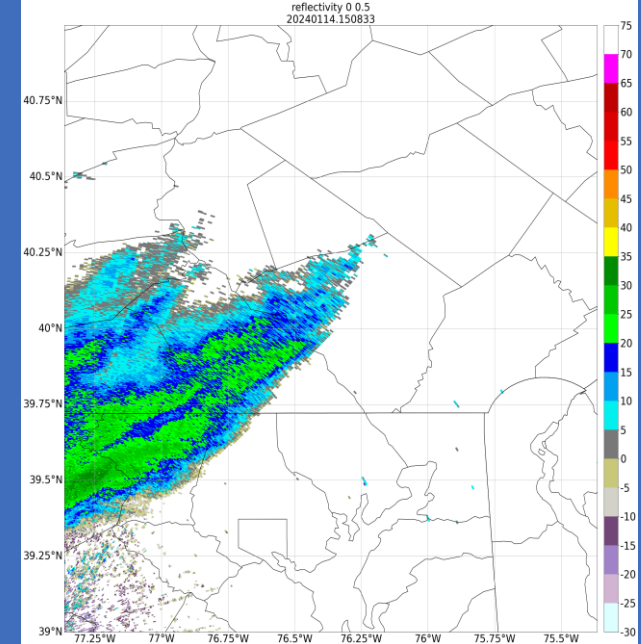
Pennsylvania Snow Squalls

Climavision[®]

KDIX – Philadelphia, PA



KLWX – Sterling, VA



The images above are timestamped at 15:07 UTC (10:07 AM EST) on January 14, 2024. Climavision's Millersville radar not only demonstrates superior tracking ability for the snow event over southeastern PA but showcases high resolution data quality as well.